

Health & Safety

Asbestos

Combustion Safety

Electrical

Moisture

Identifying potential safety roadblocks in your home

During your virtual pre-assessment, the technician will refer to areas in your home that may need to be addressed prior to implementing energy saving improvements.

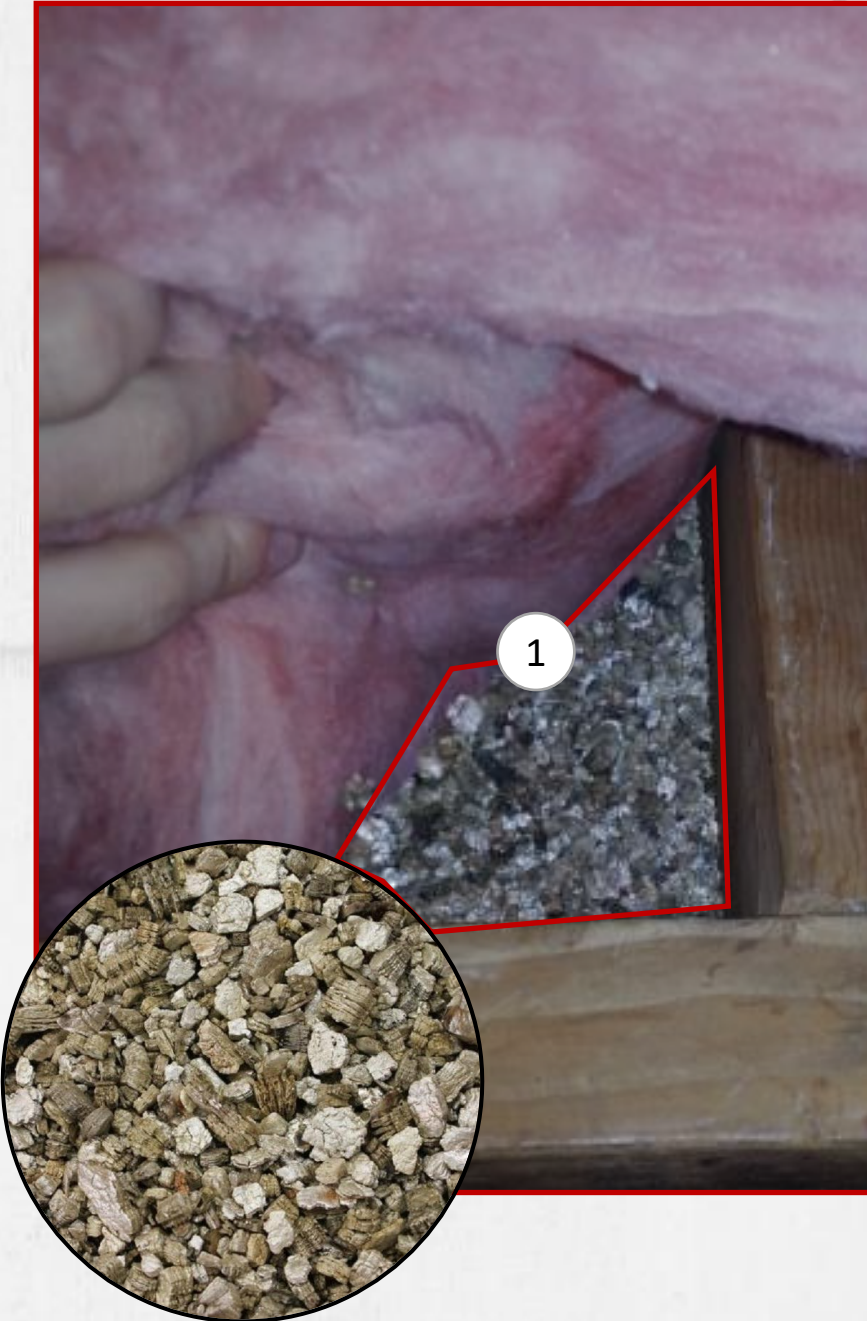
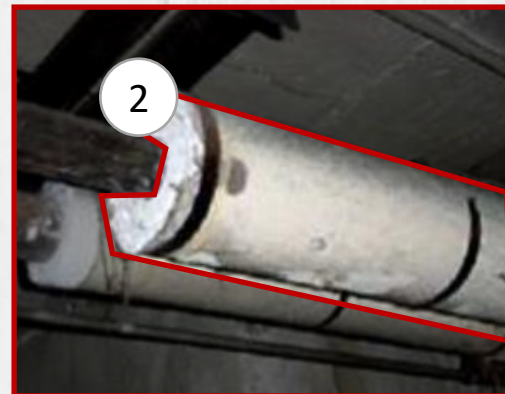
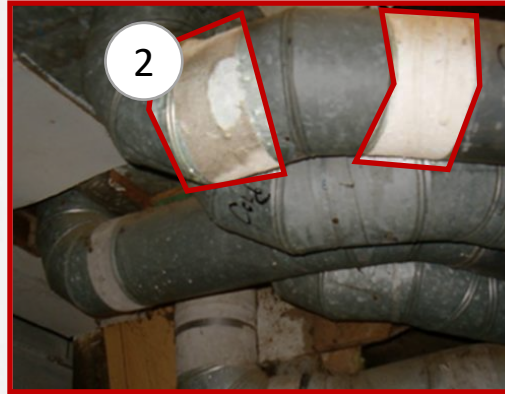
Please let the energy specialist know if you are aware of the presence of any of the materials listed below.

If at any point you feel unsafe, please stop and notify your technician.

Asbestos Like Material

1. Vermiculite insulation may contain asbestos. Be careful not to disturb any asbestos containing material.
2. Asbestos may have been used to wrap heating pipes & ducts in older homes.
3. Please document any insulation or white wrappings on the pipes or ducts, and let the energy specialist know if any of these may be present in your home.

[Return to Menu](#)





Combustion Safety

1. Take clear photo of the flue pipe from the system going into the termination (chimney, side of house, etc.) if it wasn't captured during the stand-back photo of the heating/hot-water systems.
2. Take photographs of any supplemental heat sources that are connected to gas or propane.

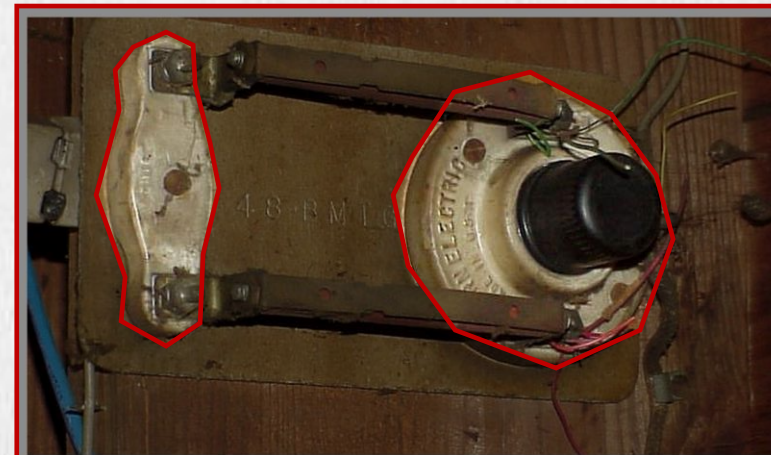
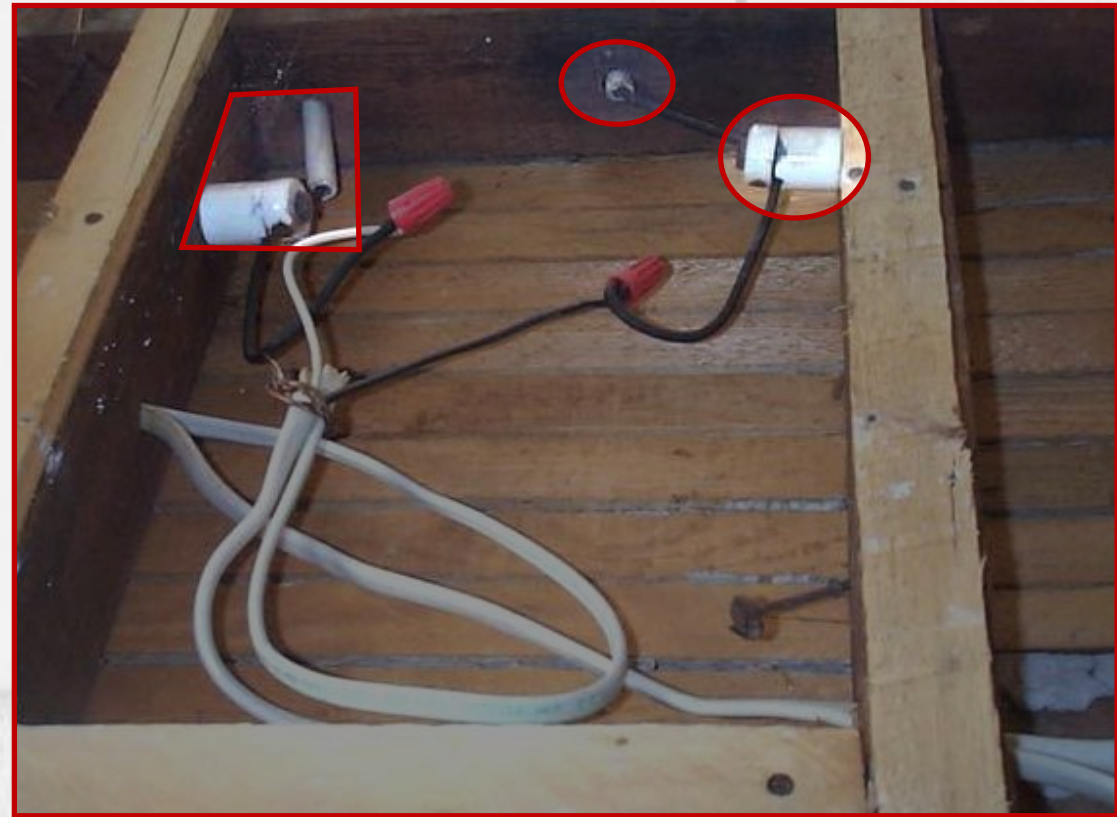
[Return to Menu](#)

Electrical

Examine the entire basement ceiling and open wall cavities for any porcelain pieces that would have been part of the home's original wiring.

Let your energy specialist know if you observe and components resembling these in home.

You may be asked to take a photo of these if they are accessible.



[Return to Menu](#)

Moisture

1. Identify any mold or mildew on the ceiling, typically found in under-ventilated bathrooms.
2. Ensure that dryer is vented to the exterior.
3. Examine the underside of the roof for any discoloration whether white, gray, or black.
4. Assess any dirt floors, patches in the basement and/or crawlspaces for standing water or signs of moisture, including discoloration or staining.

Return to Menu

